

**KANAYA-T.JP**

**KANAYA**

c /o Takaoka Metalwork Association  
Regional industrial center TAKAOKA 3F  
1-1 Kaihotsu-honmachi, Takaoka,  
Toyama 933-0909 Japan

TEL: +81-70-5630-2933

FAX: +81-766-22-0320

Mail: [info@kanaya-t.jp](mailto:info@kanaya-t.jp)



TAKAOKA • JAPAN





**KANAYA** is a brand that will add a new page  
to the 400-year history of *Takaoka douki*

The art of 400 years of *Takaoka douki*, the soul of creation passed down from generation to generation.

Contained within that art is an aesthetic sense cultivated in a rich natural environment and an abundance of time.

Through KANAYA, we hope to create something that allows people to feel comfortable while making the best of this aesthetic sense, by adding a new essence.

We hope KANAYA will also be there for an abundance of time.





### Coat stand HK+05

Hiromichi KONNO

W390 × D430 × H1730

[Color] White rust finish / Black  
Aluminum, Walnut

As we naturally move around in our daily lives, sometimes after coming back indoors from outside, we feel the need for a piece of furniture on which to place our belongings. Coat stand HK+05 was created for this purpose. It combines a small table to place a bag on, and a coat stand fitted with a bowl to put keys or a wallet in, for example. This coat stand can be placed at the entrance of homes, in living rooms or bedrooms, and also inside private spaces such as guest rooms in hotels or private rooms in hospitals.



### Floor lamp HK+06

Hiromichi KONNO

W390 × D430 × H1543

[Color] White rust finish / Black  
Aluminum, Walnut

Floor lamp HK+06 is a new interior element that incorporates practical lighting functions fitted to different lifestyles. Though it can serve as a reading light, by illuminating a place near a bed or a sofa, this stand incorporates a handy table to place a cup, and a bowl in which you can put a mobile phone or other small items. Positioned in the corner of a room, this floor lamp adds a warmer and deeper atmosphere to the space, while generating a nice and stimulating atmosphere by shading light on photographs or floral vase on the table.



### 3 Top-table HK+03

Hiromichi KONNO

W510 × D460 × H730

Aluminum, Japanese oak / Walnut

The three-level side table is made so as to be at the right height whether you are sitting on a chair or on a sofa. It can be used in many different ways: for your laptop, for placing a table lamp, or for placing cups at different heights. It can also be used as a display board for telephones or flowers.



Japanese oak

Walnut



Japanese oak, White rust finish

Japanese oak, Blue rust finish

Walnut, Blue rust finish







**Side table HK+01**

Hiromichi KONNO

W440 × D440 × H530

Aluminum, Japanese oak / Walnut

A side table gives a sense of tranquility, while consciously making the most of the appeal of the aluminum casting. The polished aluminum top shows a warm face that doesn't even look like metal, and the product seems to bring out a new face like washi. This table can always be placed nearby, and also be easily carried and assembled.



Japanese oak, White rust finish



Japanese oak



Walnut



Walnut, Red rust finish



Walnut, Blue rust finish

**Tray table HK+02**

Hiromichi KONNO

W470 × D470 × H400

Frame : White / Black,

Aluminum

[Type]

Standard : MDF

Traditional Color : Brass / Copper,

Acrylic plate

With lower shelf : MDF

With basket : MDF, Leather

A tray table with slender aluminum cast legs was designed to aim at creating a modern and sophisticated form. This table is minimalistic and beautiful which exudes a certain feeling of presence. The top can be used independently as a tray. This is a table with functions that change according to your intentions.



Standard, Black



With lower self, White



With basket, White



Traditional Color, Silver



Traditional Color, Black



With basket, Black



Traditional Color, Blue



Traditional Color, Copper



With basket, Orange

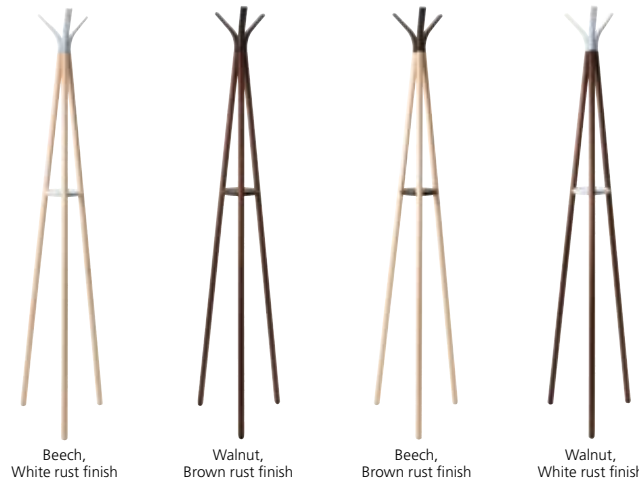




**Coat stand MK+01**  
Mikiya KOBAYASHI

W365 × D320 × H1640  
Aluminum, Beech / Walnut

Embodying a wood and casted aluminum structure, this coat stand was rigorously designed using a minimum of elements, and does not cast an overbearing presence upon its surroundings. The plate blocking the three legs is a convenient place to store keys or mobile phones.



**Towel stand MK+03**  
Mikiya KOBAYASHI

W570 × D170 × H745  
Aluminum, Base: Brass, Beech / Walnut

The posture of this towel stand does not exert any pressure on the space around it because it is a combination of wood for the core material and metallic parts. The very low center of gravity confers good stability so that the stand has no risk of falling over when towels are hung upon it.



**Umbrella stand MK+02**  
Mikiya KOBAYASHI

W223 × D223 × H600  
Aluminum, Base: Brass, Beech / Walnut

Combination of wood and aluminum cast materials processed in traditional colors, this graceful umbrella stand was created with a minimum amount of material. Thanks to the central position of the stake linking the base with the upper ring, this stake "fades out" when umbrellas are stored and the umbrella stand itself is visually absorbed by the umbrellas and the interior space.



**Toilet paper holder MK+04**  
Mikiya KOBAYASHI

W300 × D120 × H700  
Aluminum, Base: Brass, Beech / Walnut

The upper bar of this holder is capable of holding two rolls of toilet paper at once. It can also be temporarily removed, allowing more rolls to be stored on the vertical shaft for later use. Hanging towel is also possible.







**Shoehorn MK+51**  
Mikiya KOBAYASHI

Long : W120 × D120 × H660

Aluminum, Glass

Short : W34 × D20 × H240

Aluminum

[Type] Mirror finish /  
Hairline finish

[Color] Natural / Black / Blue /  
Yellow / Orange

The neat curve made by the shoehorn gently fits the heel, and the full-length size enables use while standing aright. The ethereal glass stand gives the impression that the shoehorn is piercing a body of water.



Mirror finish



Hairline finish



**Magazine rack HK+04**  
Hiromichi KONNO

W440 × D250 × H300

[Color] Wine red / Green /

Black / White / Orange

Brass, Outside: Leather, Inside: Synthetic leather

Combining the distinctive light- and color-radiating properties of brass with the smooth feel of leather, the more this magazine rack is used, the greater the visual appeal of the materials used to make it. The simple, minimal yet elegant brass frame is beautifully complemented by colors of the leather, and becomes the centerpiece of a space in a way that is both refined and distinctive.



**EN Tray HK+52**  
Hiromichi KONNO

W200 × D120 × H115

Clear, Black / Green / Orange / Wine red

Chrome plating, Black / Green / Orange / Wine red

Brass, Leather

Result of a remarkably simple and minimalist design, this tray fitted with a round ("EN-kei") handle is made of two parts supporting each other and manufactured with great care through the collaboration of a metal-casting and a leather craftsman. A work of harmony between two contrasting materials, the HK+52 was born through the "EN" ("predestined encounter") of two craftsmen, a true "EN Tray".





**Tray series SO+01**  
SOMA DESIGN

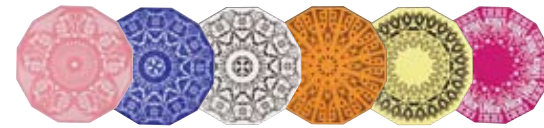
W375 × D375 × H444

Frame : Silver / Black, Aluminum

Tray : Silver / Black, Aluminum

Inner plate : Print on acrylic plate

This belongs to the tray style, giving the impression of many colors changing. The metal flower becomes the legs which remind you of stems and leaves and a tray that shows colorful and glamorous look with the inner plate. The Japanese flower motif was given to the acrylic inner plate that can be changed according to your taste. This tray style blends into any number of lifestyles.



Pink / Violet / White / Orange / Yellow / Magenta

**Square Tray SO+02**  
SOMA DESIGN

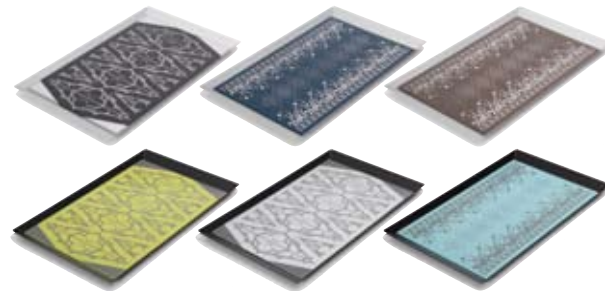
W430 × D259 × H115

Tray : Silver / Black, Aluminum

Inner plate : Print on acrylic plate

Black / Navy / Brown

Light Green / Silver / Light Blue



**Mound stool HS+01**  
Hisakazu SHIMIZU

W300 × D250 × H300

[Color] Pink / Beige / Light blue /

Light green / White

Aluminum

This Mound Stool realizes a new identity of metal casting, by taking advantage of the weight of the metal material. Completed as simply as the Japanese stone lanterns built up by a mere accumulation of stones, this shape leads our perception to identify something fundamental for human beings. In addition, the piling up of these "rounded square units", just intermediate between spherical and cubic shapes, conveys a familiar impression like that of a mushroom. The sole presence of this stool will provide a new enjoyment factor to the interior space.







### Bowl series HM+51

Hikaru MORI

Wine cooler : W210 × D210 × H248

Vase : W160 × D160 × H300

Shallow bowl : W210 × D210 × H115

[Type] Wood base / Stone base

[Color] Rust finish (Silver / Red / Blue / Black)

Aluminum, Japanese oak / Limestone

The "Bowl series" is born from a symbiosis of opposites. The series consists of a combination of aluminum vessels in traditional colors and modern materials such as wood and stone, fusing traditional Japanese style with contemporary freshness. Minimalist shapes and color variations allow a variety of applications, and new possibilities are born as the user enters into a dialog with this vessel series.



Silver rust finish, Wood base



Red rust finish



Blue rust finish, Stone base



Black rust finish

### Flower vase Sorori KA+51

W70 × D70 × H270

[Color] Rust finish (Red / White / Blue)

Brass

Named "Sorori", this flower vase design was favored by tea ceremony master Sen no Rikyu and has been appreciated by the Japanese people for the last 400 years. KANAYA gave it a rusty texture. This creation, implemented through a modern color combined with a genuine shape will add a pleasant accent to interior space.



### Small pot TR+51

TRUNK

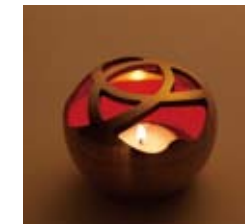
W80 × D80 × H60

[Color] White / Black / Lavender /

Pink / Green

Brass

This small pot, which looks elegant and yet sweet, can be used in a wide variety of ways, such as a vase for flowers, a candle holder, or just as something to hold small items.



### Jewelry tray TR+52

TRUNK

S : W75 × D75 × H55

M : W95 × D95 × H55

L : W115 × D115 × H55

Blue / Pink / Beige

Aluminum, Leather

This is a beautiful combination of aluminum in the form of pretty flower petals, and leather in various pastel shades. It can be used for keeping accessories such as watches, rings, necklaces and so on.







**Sakurasaku HT+51**  
Kosho TSUBOI

SAKE : W65 × D65 × H65  
ROCK : W90 × D90 × H85  
Tin

“Sakurasaku” is a 100% pure tin tumbler in which cherry blossoms flower on the tabletop, due to the water droplets of condensation that form when a cold drink is drunk. Tin also conducts heat well, so although the tumbler is made of metal, it feels comfortable to the touch.



**Clover tray HK+51**  
Hiromichi KONNO

Tin : W214 × D205 × H36  
Aluminum : W123 × D119 × H19  
Ceramic : W123 × D119 × H19

Trays with four-leaf clover motifs. The designer was hoping that you will feel a little happiness when you decorate your desks, cabinets, or dining tables with trays.



**Ice-cream cup KA+52**

S : W106 × D82 × H34  
M : W125 × D95 × H35  
L : W153 × D110 × H45  
Tin

Because of their strong cold insulation characteristics, tin utensils have the power to chill even further already cold foods or beverages, and make them more delicious. Slightly flexible, this metal allows some pleasant shape variations. In addition to its use for ice-creams, this can be used also for yoghurts or as a dressing boat.



**Mini plate KA+53**

W68 × D68 × H15  
Tin

Cute and minimized, this mini plate is adaptable to many applications, as a spice holder, a container to pour soy sauce, or as chopstick holder. Due to its flexibility, tin material allows shape variations to some extent.



**Animal charm SO+51**  
SOMA DESIGN

Bird : W40 × D34 × H53  
Rabbit : W35 × D21 × H50  
Deer : W46 × D17 × H71  
White / Black / Brown  
Bronze

These adorable animals will greet your guests as paperweights or as dining table welcome card stands. As time passes, repeated handling results in the texture aging into a multitude of unique expressions.



**Animal key ring SO+52**  
SOMA DESIGN

Rabbit : W40 × D30 × H135  
Tiger : W40 × D30 × H125  
Horse : W40 × D30 × H140  
Aluminum

These appealing key rings were meticulously designed so the facial features stay true to the animals' real-life forms. The ink-like surface treatment contours of the animals' facial expressions.



## ABOUT KANAYA

KANAYA is the brand by a traditional casting artwork technique of *Takaoka douki* (Toyama / Japan).

*Takaoka douki* started when a *Kaga daimyo*, Toshinaga MAEDA, summoned seven casters to the Kanaya-machi of Takaoka City to promote the area's prosperity in 1611 (Keicho 16).

Then KANAYA came into being from 2011 (the 400th anniversary year of *Takaoka douki*).

KANAYA offers a range of items adapted to our modern life and created to bring functionality and aesthetics to metal casting products carefully processed by craftsmen, while addressing its brand

design concept: "to share man's life moments of abundance".

KANAYA provides pleasure as it ages gracefully with ownership. Growing beauty through time is fascination. Gently caressing the products day after day brings out an elegant sheen.

We hope to create something that attracts people.

after day brings out an elegant sheen. KANAYA provides pleasure as it ages gracefully with ownership. We hope to create something that attracts people.

## Takaoka Metal Works Association

Otera Kohachiro Shouten	Sento Kazuo Shouten
ODAKOU-DOUKI Co., Ltd.	Takenaka Bronze Works Co., Ltd.
ORIHASHIJKICHI Shouten	NEWS International Co., Ltd.
KANAYA Co., Ltd.	MIYAZU Co., Ltd.
KYOUHASHIHIDEKI Shouten	YOTSUI Co., Ltd.
GINHODO Co., Ltd.	YOTSUKAWA Seisakusyo, LTD.
SEKIGIKU Co., Ltd.	

**Producer :** Toshiki KIRIYAMA, TRUNK LTD.

**Coordinator :** Miwa TAKAHASHI, TRUNK LTD.

**Graphic designer :** Ai KIMURA

**Photographer :** Yosuke OWASHI Daisuke OHKI

**Location :** River Retreat Garaku  
<http://www.garaku.co.jp/english.html>



### Hiromichi KONNO

Studied the master course in advanced product design at Institute of design, Umea University in Sweden. Konno joined Ross Lovegrove's design studio in London in 1999 and participated with mainly furniture designs as an assistant designer. Konno then went independent in 2002 and has set his own design studio in Tokyo since 2008. His various works for such international brands like Fritz Hansen, Georg Jensen, Stelton and Skagen have been well received worldwide. Konno was given the Young Japanese Design Talent Award from ELLE DECO Japan In 2009 and the Red Dot Design Award in 2013.



### Mikiya KOBAYASHI

Born in Tokyo, 1981, Mikiya Kobayashi graduated from Musahino Art University in 2005. After having worked an interior design office, he established MIKIYA KOBAYASHI DESIGN. His projects embrace furniture, product design and interiors for Japanese corporations as well as foreign companies. In 2010 he was received the German iF Gold Award and the German Red Dot Design Award. In April 2011, Kobayashi opened a store "TAIYO no SHITA" which offers curated selection of food, furniture, tabletops, objects and also his own designs. In 2011 he established MIKIYA KOBAYASHI Inc.



### SOMA DESIGN

SOMA DESIGN began various visual direction and design activities, including fashion, graphics, sound, products, packaging and video, in 2006 led by Tamae Hirokawa and Takeshi Fukui. Hirokawa also launched her own fashion brand "SOMARTA", and participated in 2007 s/s Tokyo Collection. Since then SOMA DESIGN has taken care of show production and art direction for the brand. Main works include: Canon "NEOREAL" Milan Design Week 2008, TOYOTA the iQ x SOMARTA MICROCOSMOS "DESIGNTIDE TOKYO 2008, UTx SOMA DESIGN products for Uniqlo Designers Invitation project, "BITOWA DÉCOR" and "BITOWA modern" of Aizu lacquerware brand "BITOWA"



### Hikaru MORI

Hikaru Mori obtained a PhD from Tokyo University of Fine Arts in 1991. Since then she has been working in synthetic, flexible locations concentrating on design, architecture, and landscaping in Milan. From 1999, she teamed up with Maurizio Zito in the ZITO+MORI. Her most works include: stone basin and bath "Stone LikesWater" for Pibamarmi, table lamp "Carmencita" for Nemo-Cassina, a winery for FEUDI DI SAN GREGORIO, the Atripalda municipal park, and farmhouse villa Vigna la Corte. Mori was awarded the In/Arch Campania Award Best Prize in 2010 and the Ischia International Architecture Award Silver Prize in 2011.



### SHIMOO DESIGN

SHIMOO DESIGN consisting of Saori Shimoo and Kazuhiro Shimoo was established in Toyama in 1997. Based on the concept of "beautiful tools" they aim to make use of Japanese culture and an aesthetic sense in today's lifestyle. They mainly work on wooden furniture and interior design for small items, but have designed products made of other materials too. Main works include: Amuse-bouche & Platters for Michel Troisgros, Hyatt Regency Tokyo, Rurei-Style tea space se" CHAJOKU" for the gallery of Jugetsudo Paris, and Buddhist goods "ENGU" SHIMOO DESIGN was twice awarded (1998 and 2001) the Grand Prix of the Craft Competition in Takaoka.



### Kosho TSUBOI

Born in Tokyo, 1980. He graduated from Tama Art University in 2004. Acting as Art Director/Designer of 100% Inc., he founded Hironao Tsuboi Design. Main works include: LIGH POOL, Humidifier, and Lamp/Lamp. With his flexible interpretation of the environment surrounding the objects he designs, he has established a reputation for his multifaceted approach, and works on a wide variety of products. Tsuboi was selected as one of the forty world emerging designers by I.D. Magazine in 2008 and D&D "Creative Faces" Japan's most exciting new design talent, and was awarded ELLE DECO Young Designer of the Year 2010.



### Hisakazu SHIMIZU

Born in Nagasaki, 1964. Worked for Canon Inc., and currently heads the S&O DESIGN. As chief designer of Canon's IXUS series, he was instrumental in helping the series capture the top share of the global market, and as evidenced by the numerous honors he has received, such as Germany's iF Award, and Japan's "Good Design Award" In recent years Shimizu has also worked on limited-production products, and his best-known work the "Hairstyle Mirrors" series has been sold through Galerie DOWNTOWN in Paris. In 2011, he held a private exhibition of his new Fruits series at Galerie VIVID in Rotterdam.



### TRUNK

KANAYA Producer, Toshiki Kiriya. Brand Coordinator, Miwa Takahashi. Covering design marketing, brand production and promotion, and with the aim of raising consumer awareness, TRUNK plans, coordinates and handles the overall production of a wide range of events such as design seminars and shows, as well as design and architecture exhibitions. TRUNK also produces a large number of projects, such as the Canon NEOREAL exhibition (Milan Design Week), and BITOWA (Aizu lacquerware, from Fukushima Prefecture). Kiriya also holds the post of Design Director of the Toyama Design Center.

## DESIGNERS